

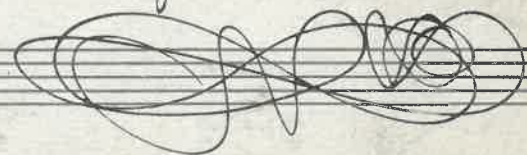
E  
LAR. 23  
R-05

Motete al Santisimo a solo de Tenor

por

Valentin Larrea.

Gabinia Agosto 31 de 1894



23 Moderato.

05



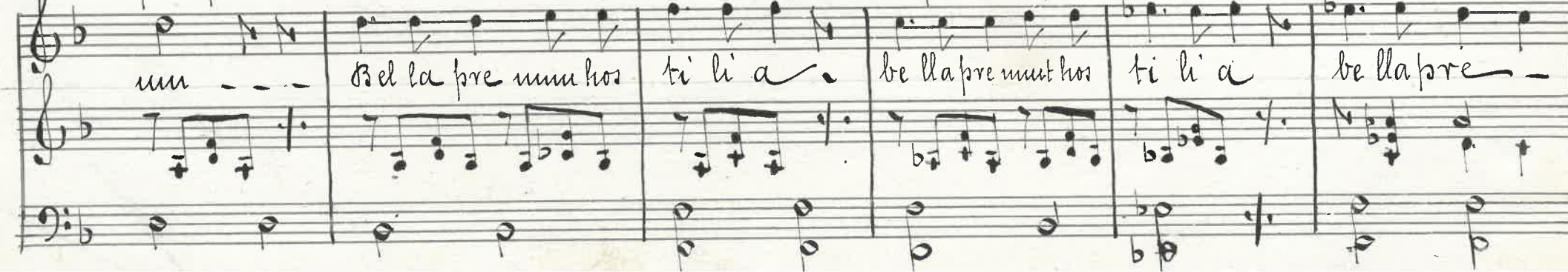
Piano introduction in G major, 3/4 time. The score consists of two staves. The right hand plays a series of chords and moving lines, while the left hand provides a harmonic accompaniment with chords and single notes. A piano dynamic marking 'P.' is present in the first measure.



Vocal line for the first system. The melody is written on a single staff with lyrics: "O salutaris O salutaris hos-ti". The accompaniment is on a second staff. Performance markings include 'rit.' (ritardando) and 'Ped.' (pedal). The key signature has one sharp (F#).



Vocal line for the second system. The melody is written on a single staff with lyrics: "que ce li san ctis - san ctis hos ti". The accompaniment is on a second staff. The key signature has one sharp (F#).



Vocal line for the third system. The melody is written on a single staff with lyrics: "un - - - - - bel la pre mium hos ti li a be lla pre mium hos ti li a be lla pre -". The accompaniment is on a second staff. The key signature has one sharp (F#).

mur hosti li a da ro bur fer au xi li um

*ped.*

O sa lu ta ris hos ti a hos ti a que ce li pau dis

hos ti - um be lla pre munt hos ti li - a - da ro bur

fer - au xi li um da ro bur im per au xi li - um